

The Wall for iManage Work®

Requirements:

- Windows 2008/2003/XP
- 1GB of Memory
- iManage Work 7.x server (or greater)
- All Work databases must have identical Custom1 & Custom2 tables

Features:

- ▶ Runs as a service
- ▶ Supports unlimited number of databases
- ▶ No client software required
- ▶ Does not extend Work schema
- ▶ Powerful administration interface

Pricing:

Annual Maintenance is calculated @ 20% of total list price

Includes support for up to 5 iManage Work Databases and 100 users

License is based on the iManage User count

For Information Contact:

Donna Keys
 4426 Mountain Rd.
 Pasadena, MD 21122
 Phone: (202) 588-2000 x103
 Fax: (410) 360-6052
 Email: dkeys@younts.com

Product Description

The product provides ethical screen protection for your iManage Work system. The Wall allows for unlimited protection by Custom1/Custom2 (Client/Matter).

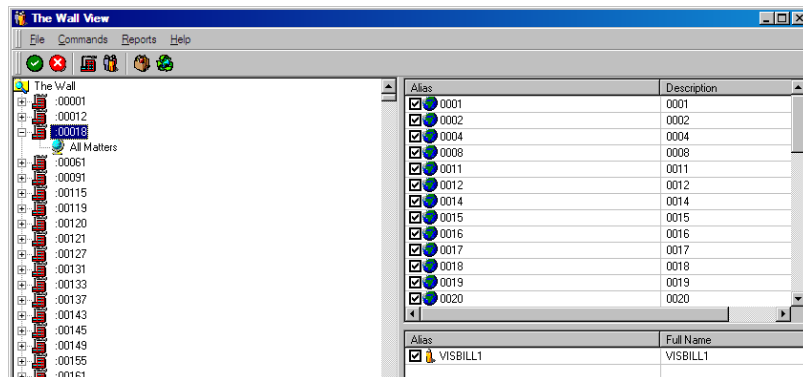
This system allows you to deny or grant access to users or groups based on a custom field value while supporting an unlimited number of databases. The Wall server component runs as a service on Windows.

There are two primary components to the system:

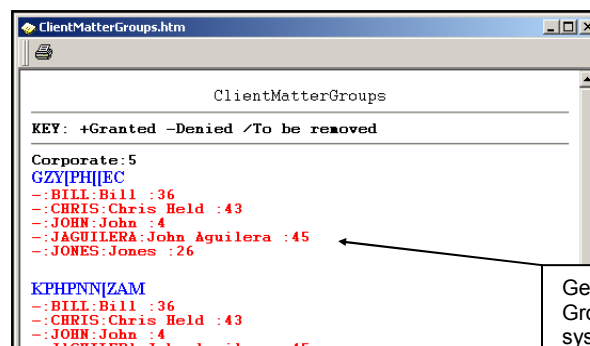
- 1) Service which modifies access rights in Work as documents are created or modified.
- 2) Wallview is an application which is run by an administrator to control access rights based on field values in Work.

Hierarchy of Clients, Matters and Users or Groups assigned to them.

List of Matters selected to be assigned.



List of Users selected to be assigned.



Generate reports on Users or Groups that are in The Wall system.