

Requirements:

- iManage Work 8.0+
- .NET framework v1.1

Features:

- Right-click from Windows Explorer and import documents into iManage
- The enhanced File SaveAs Dialog is displayed to allow easy navigation to Workspace/Folder
- Allows user to import single files or entire folder directories
- All children folders are processed
- Allows user to choose to rename files once they are imported

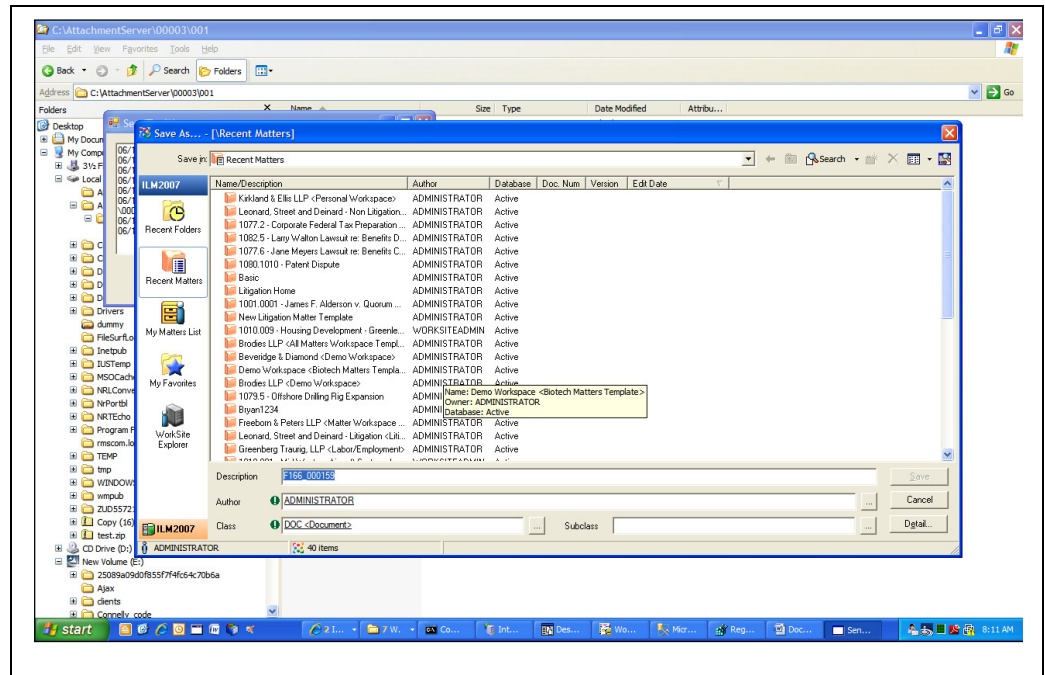
Pricing:

Annual Maintenance calculated @ 20% of total list price

Must match iManage client license count

For Information Contact:

Donna Keys
 4426 Mountain Rd.
 Pasadena, MD 21122
 Phone: (202) 588-2000 x103
 Fax: (410) 360-6052
 Email: dkeys@younts.com



Product Description

SendTo_iManage allows importing of files from Windows Explorer. There is no longer a need to create a profile for each imported document and manually import. After right-clicking on a file, the iManage enhanced File SaveAs dialog is displayed.

The end-user simply chooses a workspace/document folder by either searching or navigating to their Matter Worklist. The first file is imported into the folder. Each subsequent file will inherit the profile values and security of the initial file and will be linked to the chosen document folder.

SendTo_iManage can be used on an ad-hoc basis or can be used to import an entire file share.